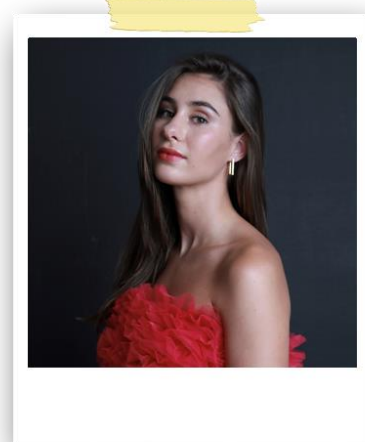


## MILA DE VILLIERS

### FILM/TV/THEATRE/COMMERCIALS



**HEIGHT:** 1.72

**HAIR:** BROWN

**EYES:** BROWN

**LANGUAGE(S):** ENGLISH, AFRIKAANS

**ACCENTS:** BRITISH RP, BRITISH COCKNEY, AMERICAN RP

**SKILLS:** SINGING, DANCING, UKULELE, MODELLING, FITNESS SPORTS  
AEROBICS, NETBALL

### FILM

TITLE	ROLE	DIRECTOR/PRODUCTION COMPANY
DIE OOG	ANNA	DIR. SHARFA DU PLESSIS/PREMIERE

### TV

TITLE	ROLE	DIRECTOR/PRODUCTION COMPANY
DIE BYL	ELIAAN/LAYLA BODY DOUBLE	DIR. NINA SWART/LION'S HEAD PRODUCTIONS

### THEATRE

TITLE	ROLE	DIRECTOR/PRODUCTION COMPANY
ANNA WEISS	ANNA WEISS	DIR. ANDRIE THERON/US DRAMA DEPT
KWANSUIS KREATIEF EN DIE VLOEK DAARBY	CHRISTIE	DIR. NICOLA VIVIERS/PREMIERE
DIENSMEISIES	CLAIRE	DIR. ANDRIE THERON/US DRAMA DEPT
ASPOESTERELLA	PRINCE THOMAS FORD	DIR. SCHALK-WILLEM VAN DER MERWE
SONDE MET DIE SPOKE	SANTOR/VEEWAGTER/ PASSASIER 1	DIR. NICOLE HOLM/US DRAMA DEPT
RAKEL EN KLARA VERSUS DIE WERELD	KLARA	DIR. NICHOLA VIVIERS/PREMIERE

SEMELS	SUSSIE	DIR. MIANDRA HAYWARD/PREMIERE
DIE RANDEIER	MIRA	DIR. KRISTIN PIENAAR/TIENERTONEEL
BEAUTY AND THE BEAST	BABETTE	DIE.LESLEY GREENWOOD/OXFORD THEATRE DURBANVILLE

## COMMERCIALS

TITLE	ROLE	DIRECTOR/PRODUCTION COMPANY
SHANGRI-LA DEUR HEUWELS FANTASTIES – MUSIEKVIDEO	GIRL IN RELATIONSHIP	DIR. NELIS BOTHA
JAMESTOWN FLOWER FARM	GIRL AT FLOWER FARM	BLUE HOUSE MEDIA
VIDA NOVA RETREAT	GUEST	BLUE HOUSE MEDIA
MESH AND BONE SKINCARE	GIRL	BLUE HOUSE MEDIA
PRINTLAB STELLENBOSCH	PHOTOGRAPHER	BLUE HOUSE MEDIA

## TRAINING

YEAR	DESCRIPTION
2021-2023	BA DRAMA & THEATRE STUDIES – STELLENBOSCH UNIVERSITY