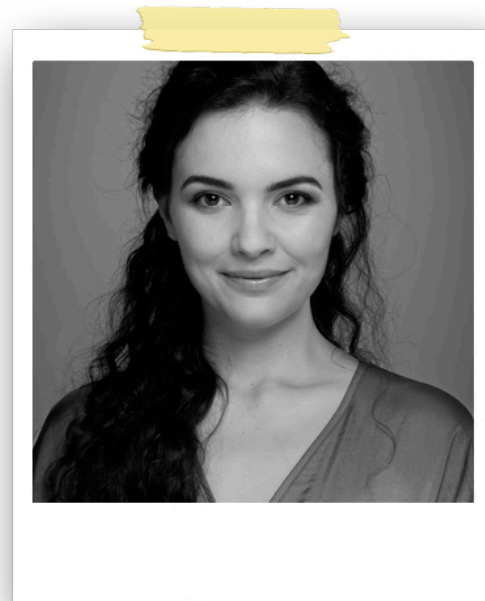


**MARIA VOS**  
**FILM/TV/THEATRE/VOICE/  
 COMMERCIALS**



<b>HEIGHT:</b>	174CM	<b>LANGUAGE(S):</b>	ENGLISH	<b>ACCENTS:</b>	RP
<b>HAIR:</b>	BROWN		AFRIKAANS		STND AMERICAN
<b>EYES:</b>	BROWN		DUTCH (INTERMEDIATE)		IRISH
			FRENCH (BASIC)	<b>SKILLS:</b>	SINGING
			GERMAN (BASIC)		DANCING (LINDY HOP, MODERN, SWING, TAP DANCE)

**FILM**

TITLE	ROLE	DIRECTOR/PRODUCTION COMPANY
BRING IT ON: WORLDWIDE #CHEERSMACK	GARRULOUS MOTHER	DIR. ROBERT ADETUYI
PIRATES OF SOMALIA	AVRIL BENOÎT	DIR. BRYAN BUCKLEY
DER GEILSTE TAG	KINKY TOURIST	DIR. FLORIAN DAVID FITZ

**TELEVISION**

TITLE	ROLE	DIRECTOR/PRODUCTION COMPANY
ICE - SEASON 2	FEMALE TALK SHOW HOST	DIR. GUY BEE
AMERICAN MONSTER - SEASON 3	MATILDA LAFFERTY	DIR. LYDIA DELMONTE
BOLAND MOORDE II EP. 5	ABIGAIL	DIR. LOUIS PRETORIUS
DOMINION II	FEATURED	SYFY, FILM AFRIKA
SAINTS & STRANGERS	ELIZABETH WINSLOW	DIR. PAUL EDWARDS

## THEATRE

TITLE	ROLE	DIRECTOR/PRODUCTION COMPANY
IMMORTAL	ON-STAGE SWING	DIR. JOSHUA G. ACKERMAN, STANDING O
NASTY WOMXN	LEAD	DIR. DARA BETH, THE FURIES CO.
THE FOUR SEASONS	NARRATOR	WITH PETRUS DE BEER AND ORCHESTRA
JERICOH	FEATURED	DIR. JACI DE VILLIERS

## TV COMMERCIALS

CORONATION  
SAMSUNG PAY  
HELLMANN'S  
PRINCIPAL FINANCIAL  
AAMI INSURANCE  
NESCAFE

## TRAINING

YEARS	DESCRIPTION
2019	MASTER'S IN ACTING (WITH DISTINCTION) – BIRMINGHAM CONSERVATOIRE
2010	STELLENBOSCH UNIVERSITY BA (CUM LAUDE)
2011	KREA AMSTERDAM – INTRODUCTION TO STANISLAVSKI WITH ARNICA EISENDOORN
2013	ACT CAPE TOWN
2013	STELLENBOSCH UNIVERSITY MA (CUM LAUDE)